

VigorSwitch G1240

24 Gigabit Port Web Smart Switch

- 4 Dual Media ports for flexible fiber connection
- QoS with four-level priority queues
- Port Mirroring for monitoring network without breaking down data flow
- 802.1x Access Control for improving network security
- Port trunk for balancing traffic load
- Auto detect client idle or cable length for Power saving
- 802.1d compatible and 802.1w Rapid Spanning Tree

The DrayTek VigorSwitch G1240 is a cost-effective web smart switch that meets all IEEE 802.3/u/ab/z Gigabit, Fast Ethernet specifications. It is equipped with 20 10/100/1000Base-T ports and 4 dual media ports that accommodate optional 10/100/1000Base-T or SFP modules. The switch can be managed through Ethernet port using Web browser, the network administrator can logon the switch to monitor, configure and control each port's activity. In addition, the switch implements the QoS, Port Mirror, VLAN, LACP, LAN security, Multicasting video stream protocol, and SNMP. It is suitable for SMB application.

QoS (Quality of Service)

With DrayTek VigorSwitch G1240, the QoS feature provides four internal queues to support four different classifications of traffic. High priority packet streams experience less delay inside the switch, which supports lower latency for certain delay-sensitive traffic. The switch classifies the packet as one of the four priorities according to 802.1p priority tag, DiffServ and/or IP TOS. The QoS operates at full wire speed.

Port Mirroring

Port Mirroring mechanism helps track network errors or abnormal packet transmission without interrupting the flow of data, allowing ingress traffic (RX mode) to be monitored by a single port that is defined as mirror capture port. The mirror capture port can be any 10/100 port, 10/100/1000 port.

Network Security

802.1x features enable user authentication for each network access attempt. Port security features allow you to limit the number of MAC addresses per port in order to control the number of stations for each port. Static MAC addresses can be defined for each port to ensure only registered machines are allowed to access. By enabling both of these features, you can establish an access mechanism based on user and machine identities, as well as control the number of access stations.

Bandwidth Aggregation

The Gigabit ports can be combined together to create a multi-link load-sharing trunk. Up to 12 Gigabit ports can be set up per trunk. The switch supports up to 12 trunking groups. Port trunks are useful for switch-to-switch cascading, providing very high full-duplex speeds.

Flexible Fiber Connection

Four dual media ports are provided for flexible fiber connection. You can select to install optional transceiver modules in these slots for short, medium or long distance fiber backbone attachment. Use of the SFP will disable their corresponding built-in 10/100/1000Base-T connections.

Power Saving

The Power saving using Power Management techniques to detect the client idle and cable length automatically and provides the different power. It could efficient to save the switch power and reduce the power consumption.



VigorSwitch G1240

24 Gigabit Port Web Smart Switch

DrayTek

www.draytek.com

Standard Compliance

- IEEE 802.3x Flow Control Capability
- IEEE 802.1q VLAN
- IEEE 802.1p QoS
- IEEE 802.1w Rapid Spanning Tree
- IEEE 802.3ad Port Trunk with LACP

Performance

Switching capacity

- 48Gbps Forwarding Bandwidth for Switch, Non-blocking Switch Fabric Wire Speed Performance
- 8 K MAC Addresses
- 500KB On-chip Frame Buffer
- Jumbo Frame Support to 9600 bytes
- Unknown Unicast/Multicast/Broadcast/ Storm Suppression
- Port Mirroring

VLAN

- Port-base VLAN
- IEEE802.1q Tag-base VLAN, 4094 Max, up to 24 Active VLANs
- In Tag-base VLAN, Supports Egress/Ingress Packet Filter

QoS

- Supports Port based, Tag based, IPv4 ToS and DSCP
- Supports 802.1p QoS with Four-level Priority Queue
- Supports Two Scheduling, WRR and Strict

Bandwidth Control

- Supports Bandwidth Rating per Port Ingress and Egress Rate Limit 1000Mbps with 1Mbps Increment

Protocol

LACP/Port Trunk

- Port Trunking with 12 Trunking Groups
- Up to 12 Ports for Each Group

Multicasting

- Supports IGMP Snooping

Network Security

- Supports 802.1x Access Control for Multi-host Authentication for Port based
- Supports MAC based Authentication with Radius Server

SNMPv1, v2c Network Management

- RFC 1213 MIB II
- RFC 1493 Bridge MIB
- RFC 2863 Interface Group MIB

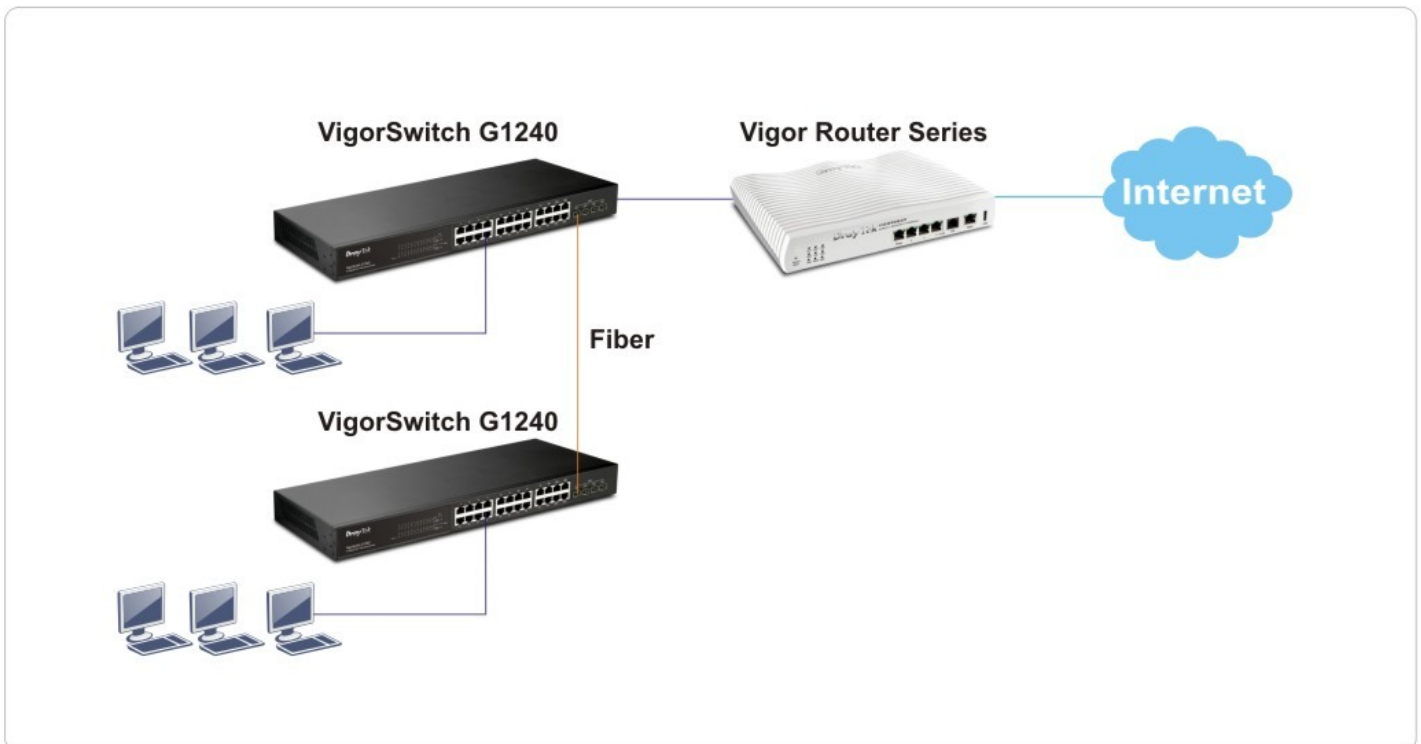
Interface

- 24 x 10/100/1000Mbps Ports, RJ-45
- 4 x SFP Dual-media Ports (Shared with 4 Gigabit Ports)
- 1 x Reset Button

Environmental / Physical

- Power: 100~240 VAC, 50~60 Hz
- Operating Temperature: 0 to 40°C
- Humidity: 10 to 90% RH (non-condensing)
- Dimensions: 44(H) x 442(W) x 170(D) mm
- Weight: 2.4 kg

* Firmware Upgradable



www.draytek.com E-mail: info@draytek.com Tel: +886 3 597 2727 Fax: +886 3 597 2121

www.voipon.co.uk sales@voipon.co.uk Tel: +44 (0)1245 808195 Fax: +44 (0)1245 808299

