

# W712 RoIP Gateway



**LINKVIL**



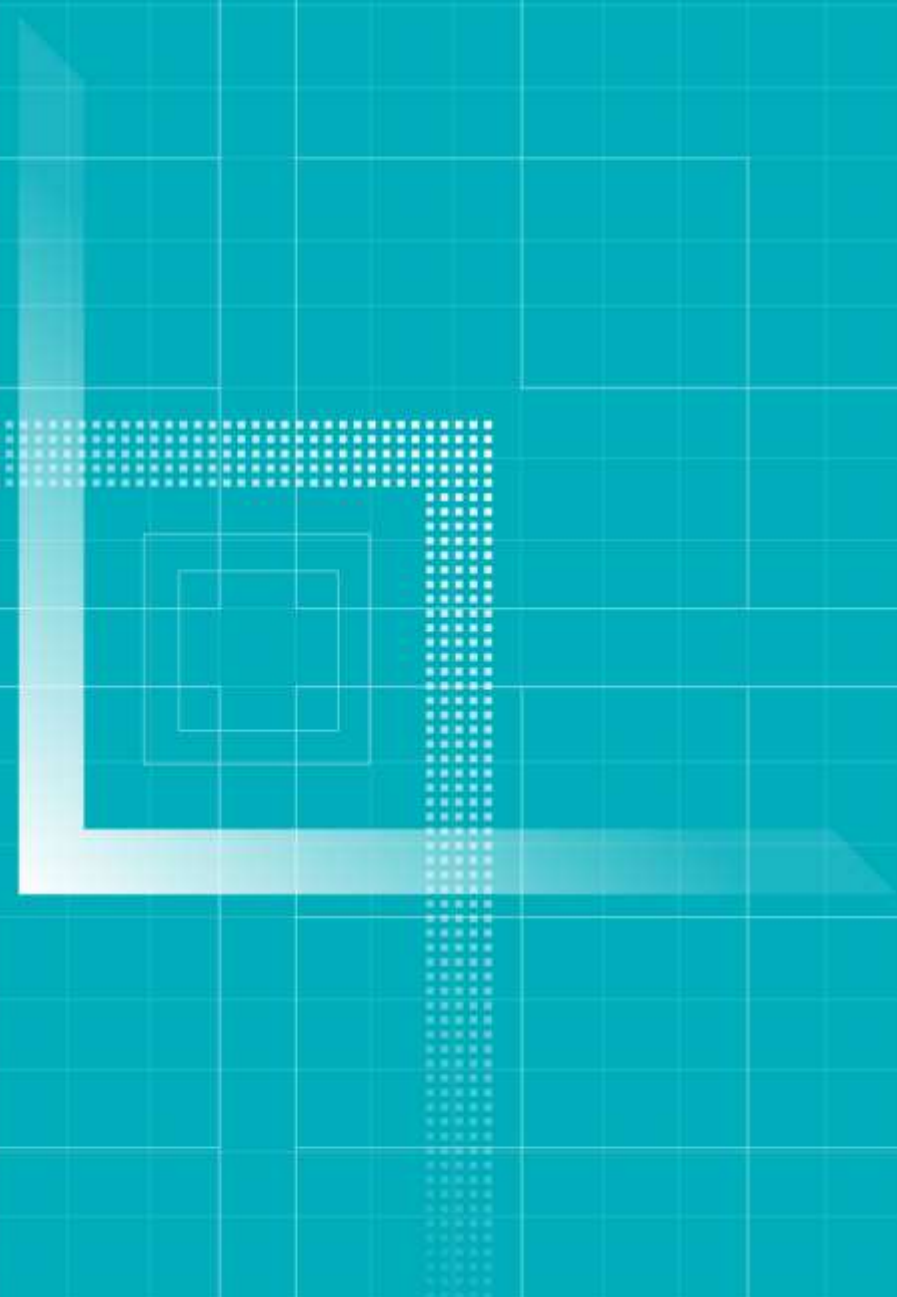
# Contents

**01** Product Introduction

**02** Application Scenarios

PART 01

# Product Introduction



# W712 RoIP Gateway

Interconnected | Easy-to-deploy | Easy-to-manage

LINKVIL W712 is a RoIP gateway with built-in radio and SIP modules, which **enables great interconnection between analog/ digital two-way radios and SIP communication devices**. Small, portable and powerful, W712 gateway is compatible with mainstream analog/ DMRII digital two-way radios and easy to deploy and manage. It is suitable for internal communication in different scenarios, such as community security, industrial parks, supermarkets, hospitality, campus security, etc.



W712 RoIP Gateway

## Realize interconnection between analog/ digital radios and SIP communication devices



SIP  
Protocol



400-470  
MHz



HD  
Audio



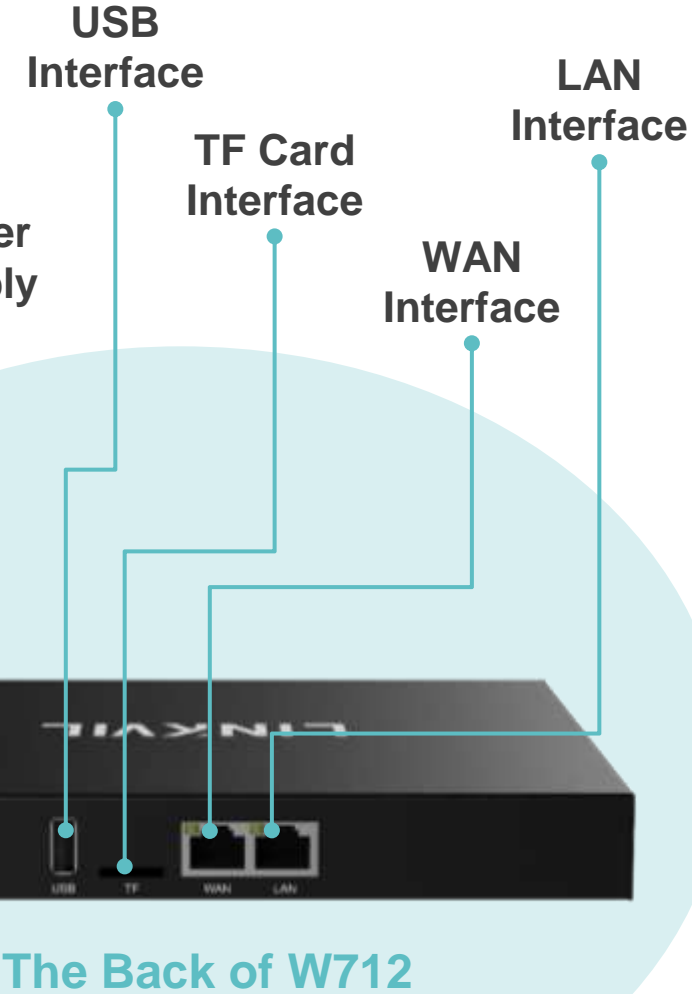
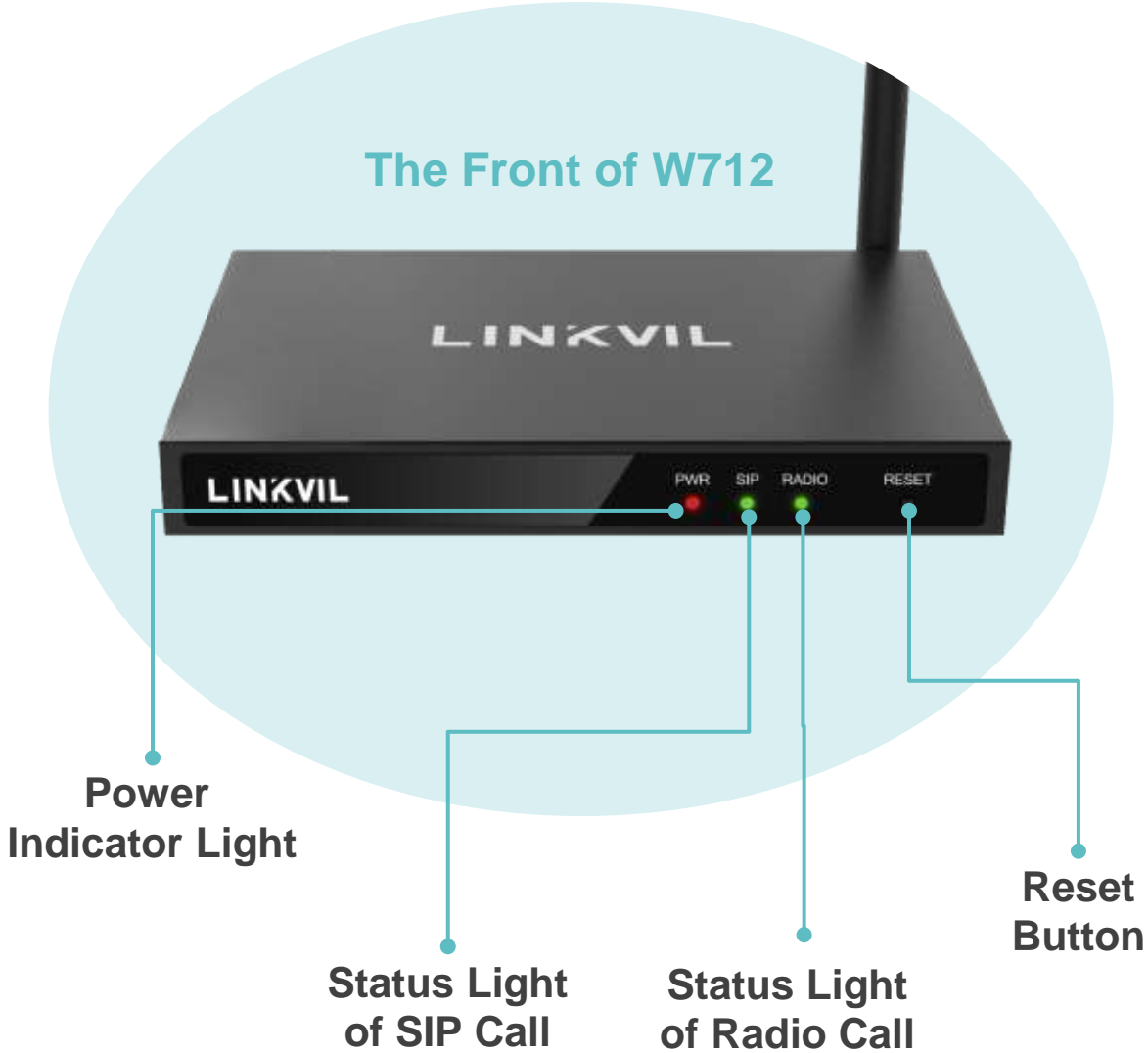
Call  
Recording



Web  
Management

<b>Connection Amount</b>	Support 1 connection of analog/ digital radio, 1 connection SIP call
<b>Radio Frequency</b>	Built-in analog/ DMRII digital modules : UHF 400MHz ~ 470MHz
<b>Internet Protocol</b>	SIP standard protocol
<b>Wideband Audio Codec</b>	G.722, Opus
<b>Radio Distance</b>	1 ~ 3 km (depending on the actual environment)
<b>USB Interface</b>	USB2.0 Type-A, connecting USB card
<b>TF Card Interface</b>	Standard TF card interface (support 128GB max TF card)
<b>Network</b>	Dual 10/ 100Mbps Ethernet port
<b>SIP Hotspot</b>	Used as a small IP PBX
<b>Power Supply</b>	PSU/ PoE (Class 4, 802.3at)
<b>Installation</b>	Desktop/ wall-mounted
<b>Compatibility</b>	Compatible with the Motorola, Hytera and other mainstream analog/digital radios

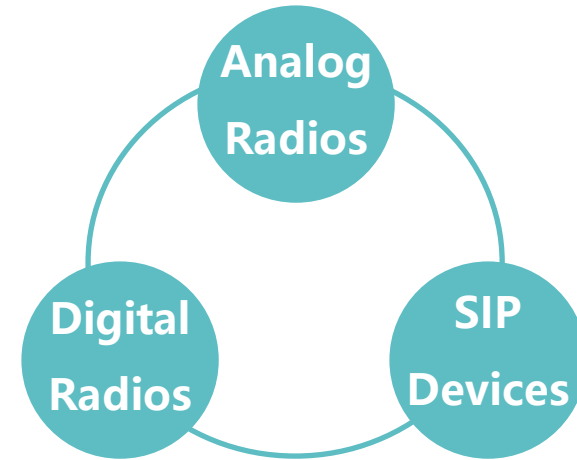
The Front of W712



## Interconnection between Different Communication Systems

---

The W712 RoIP gateway integrates the radio module in UHF 400-470 MHz and adopts the SIP standard protocol. It is compatible with most mainstream IP PBX, easily realizing the interconnection between analog/ DMRII digital intercom and SIP communication devices.

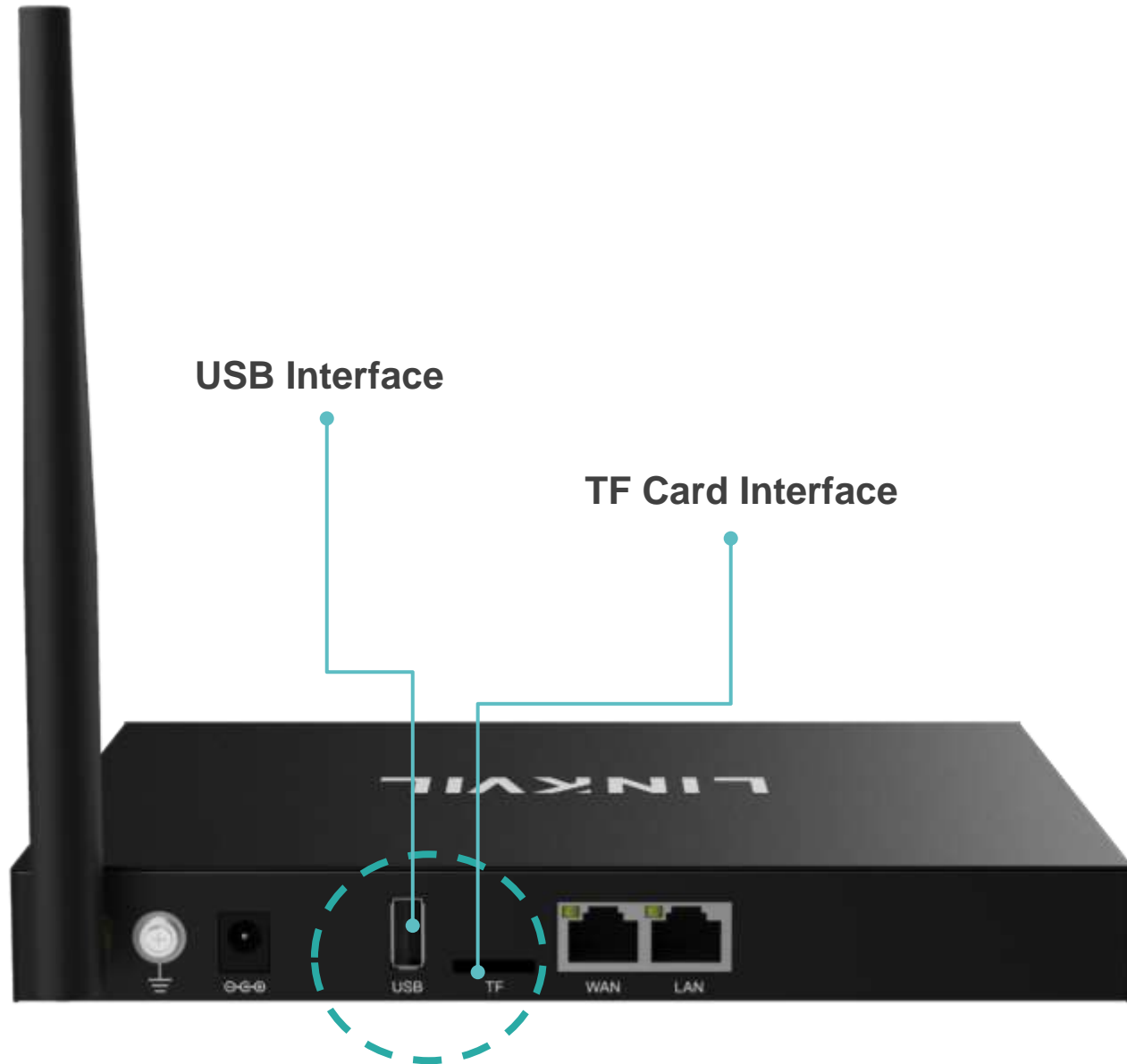




## Plug and Play, Easy Management

With built-in wireless radio module, W712 RoIP gateway is small and portable, similar to the size of a router. W712 can be deployed and managed through the web page, achieving the easy management.





## Support Call Recording

W712 RoIP gateway is equipped with USB interface and TF card interface that supports the capacity of up to 128G, which can be used to record the calls.

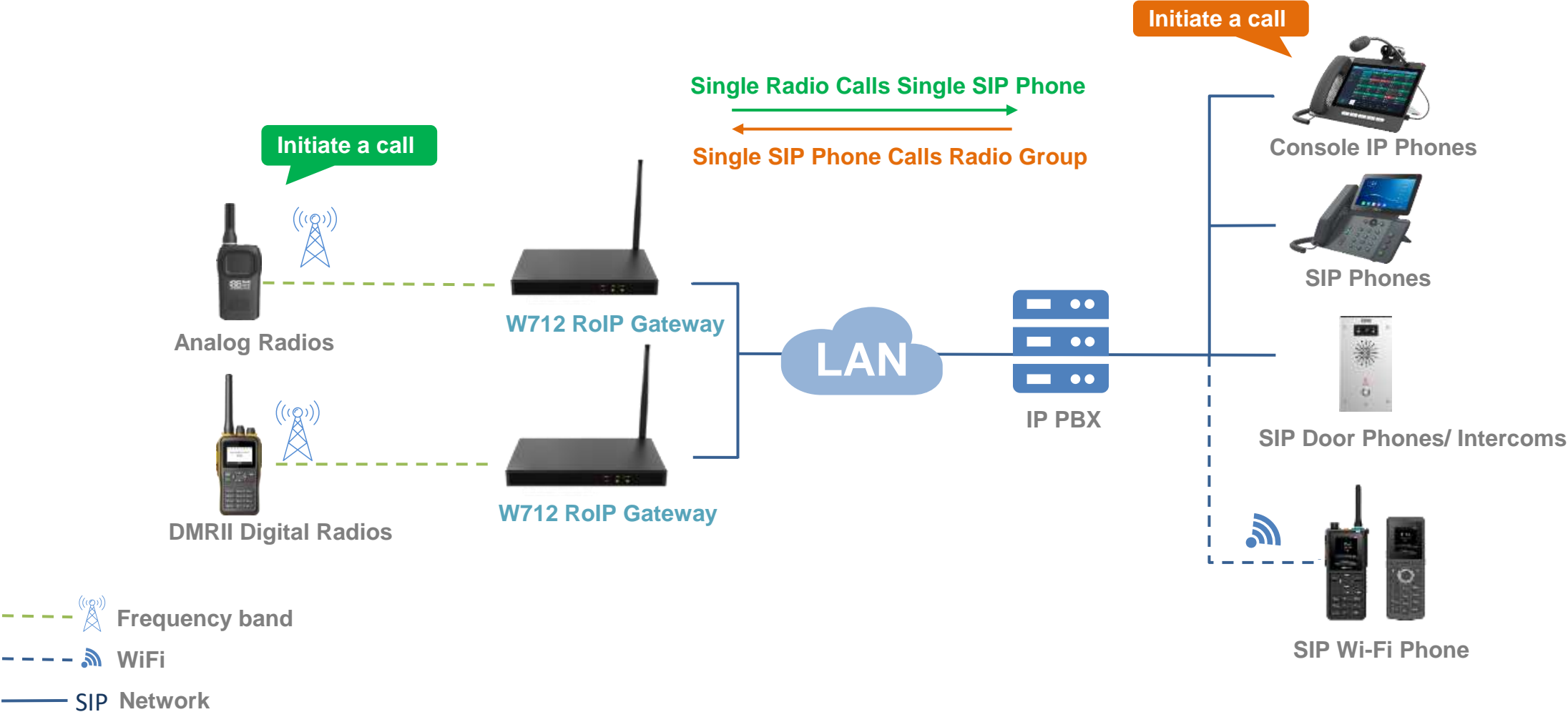
## Used as Small IP PBX

Featuring SIP hotspot, W712 RoIP gateway can be used as the IP PBX in the small-sized scenarios, saving more equipment cost.



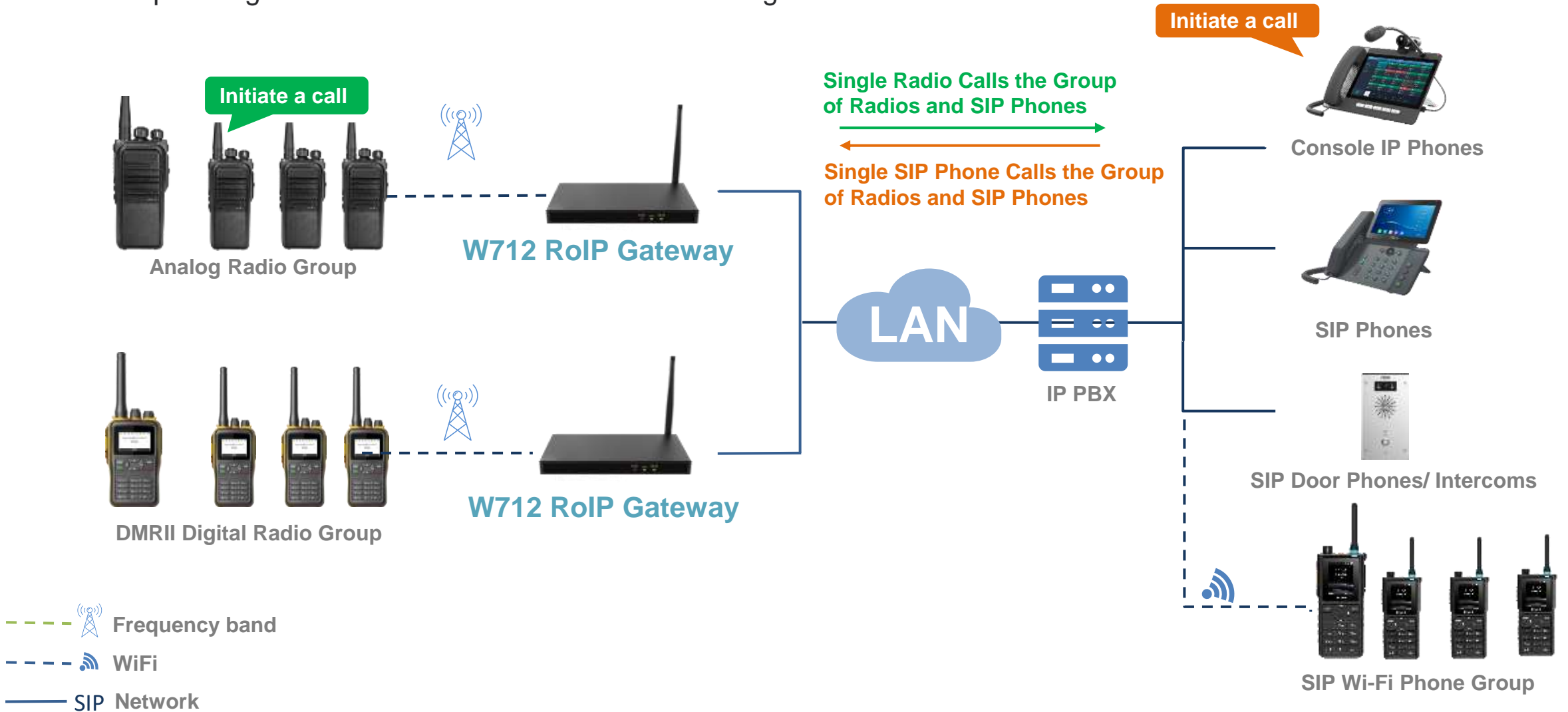
# W712 Gateway Function: Single Call

W712 RoIP gateway supports 1 connection of analog/ DMRII digital radio and 1 connection of SIP call, realizing the real-time communication between the management center and the staff.



# W712 Gateway Function: Group Call

W712 RoIP gateway supports group calls between analog/digital intercom and SIP phones, realizing the communication and dispatching of all team members from the monitoring center.



### Control Center



The Control Center section contains three main components: an IP PBX represented by a server rack icon, two Console IP Phones with microphones, and a Dispatching Management Platform shown as a person working at a computer workstation. A dashed line connects the IP PBX to the Console IP Phones.

Multiple DSS keys on SIP phones can be used as speed dial keys for different groups

It is suitable for the central management in community security, hospitality, transportation, supermarkets,.

WAN

### Region 1

### Region 2

### Region 3



Region 1 features a W712 RoIP Gateway connected via a dashed line to a radio tower icon, which in turn connects to two mobile phones. The gateway is labeled "W712 RoIP Gateway" at the bottom.



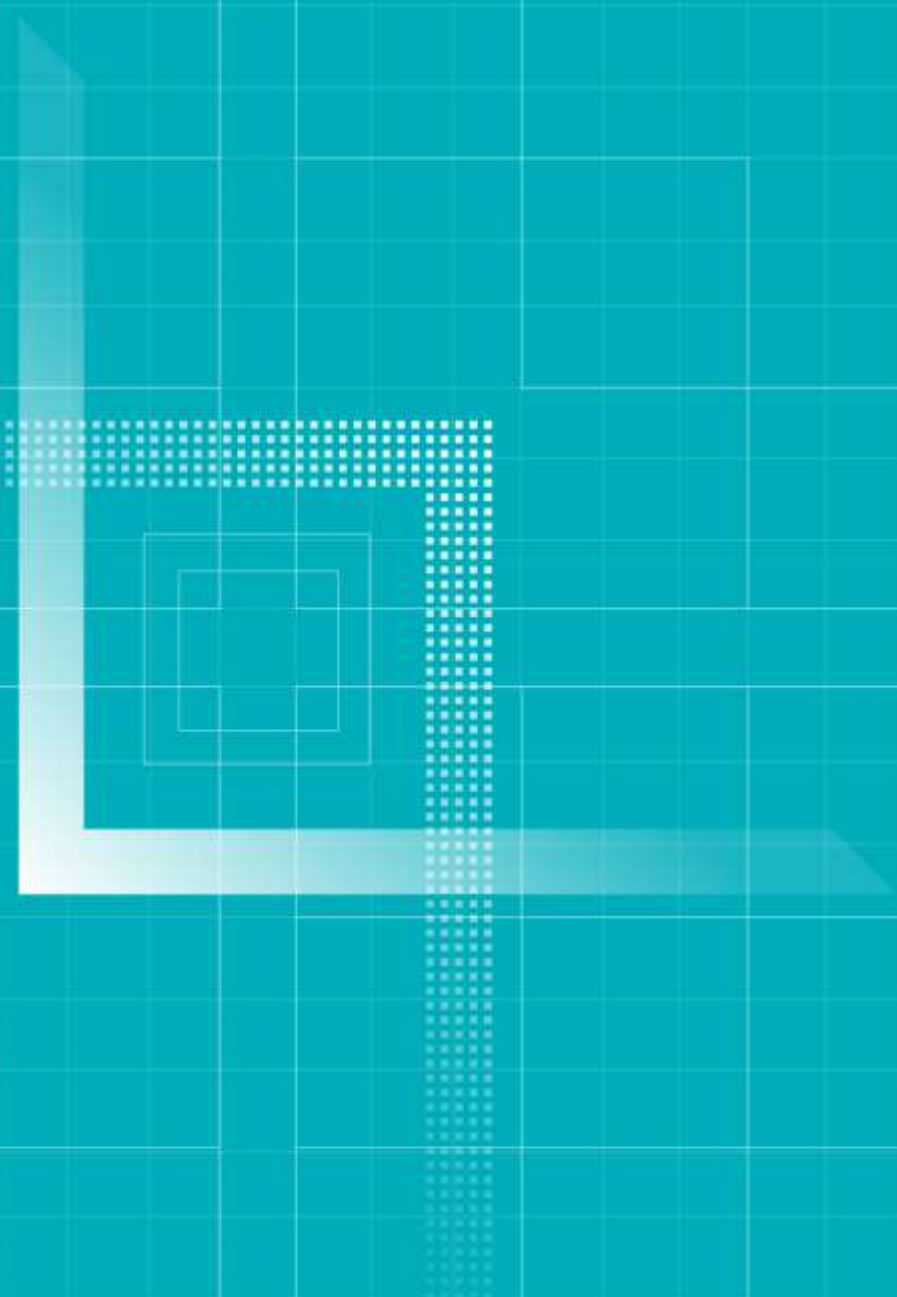
Region 2 features a W712 RoIP Gateway connected via a dashed line to a radio tower icon, which in turn connects to two mobile phones. The gateway is labeled "W712 RoIP Gateway" at the bottom.



Region 3 features a W712 RoIP Gateway connected via a dashed line to a radio tower icon, which in turn connects to two mobile phones. The gateway is labeled "W712 RoIP Gateway" at the bottom.

PART 02

# Application Scenarios





**Picture** - Different Radios are Divided into Different Groups with Signboards

## ◆ Difficult Management to Different Communication Devices

Different working groups may use different analog, digital, SIP communication devices, which can not be interconnected directly

## ◆ High Operation Cost for Trans-regional Communication

Communication range is limited for analog and digital radios, so radios cannot connect with each other between different cities and regions



Interconnection between analog, digital and SIP communication devices

Unified central management of control room for trans-regional devices

Reduce the management cost and improve the dispatching efficiency



# Building Security: Provide the Instant Communication



**Cleaner**  
Communicate with management center with analog/ digital radios

**Residents**  
Communicate with the management center via indoor station



**Sever Room**  
W712 gateway connects the analog/digital radios and SIP communication devices

**Building Entrance**  
Visitors can call the owners or the management center to enter



**Management Center**  
Communicate with the working group of cleaners and security for emergency



**Unmanned Parking Lot**  
Management center achieves the communication and broadcasting with owners



**Security**  
Report the situation to the management center





Console IP Phone

**Single Call/ Group Call with Security**



Underground Parking Lot Patrol

**Easily Contact the Security in the Underground Parking Lot**



Elevator Intercom

**Ask for Help when Stuck in Elevator**



Building Intercom

**Call the Security when Happen to an Emergency**



Alarm System

**Different Alarm Devices Connect with the Radios**

# Industrial Park: Communication between Office and Warehouse





IP Phones in Office

**Communicate with Warehouse Supervisor about Shipping Issues**



SIP WiFi Phones

**Mobile Workers in Office call the Warehouse Supervisor**



Warehouse Intercom

**The Warehouse Supervisor Calls for Help for Emergencies**



Alarm System

**Different Alarm Devices Connect with the Radios of Supervisor**

# Construction Site: Instant Broadcasting for Emergency



**Project Supervisor**  
Communicate with workers  
when inspecting the site



**Broadcasting**  
Realize the broadcasting via  
analog/digital radios when  
discovering the emergency



**Server Room**  
W712 gateway connects the  
analog/digital radios and SIP  
communication devices



**Office**  
Communicate with  
workers and achieve the  
broadcasting





IP Phones in Office

**Single Call/ Group Call with Construction Workers**



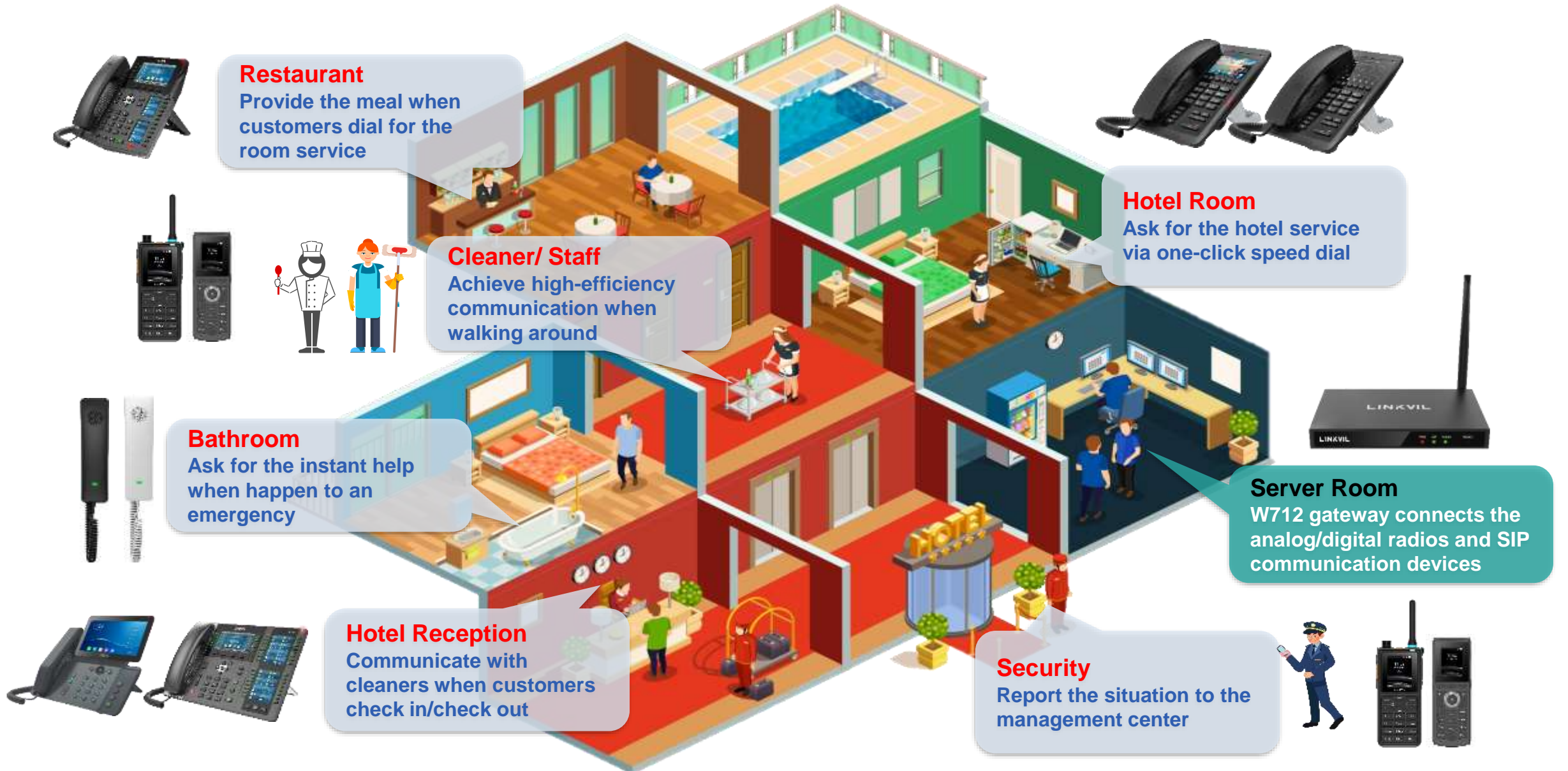
Broadcasting Intercom

**Achieve the Emergency Broadcasting to Workers**



Alarm System

**Different Alarm Devices Connect with the Radios of Supervisor**





SIP Phones at Reception

**Front Desk Staff  
Arrange the Cleaners  
to Check out**



SIP WiFi Phones

**Lobby Manager Calls  
the Cleaner/ Security  
during the Inspect**



Hotel SIP Phone

**Customers Ask for  
the Room Service**

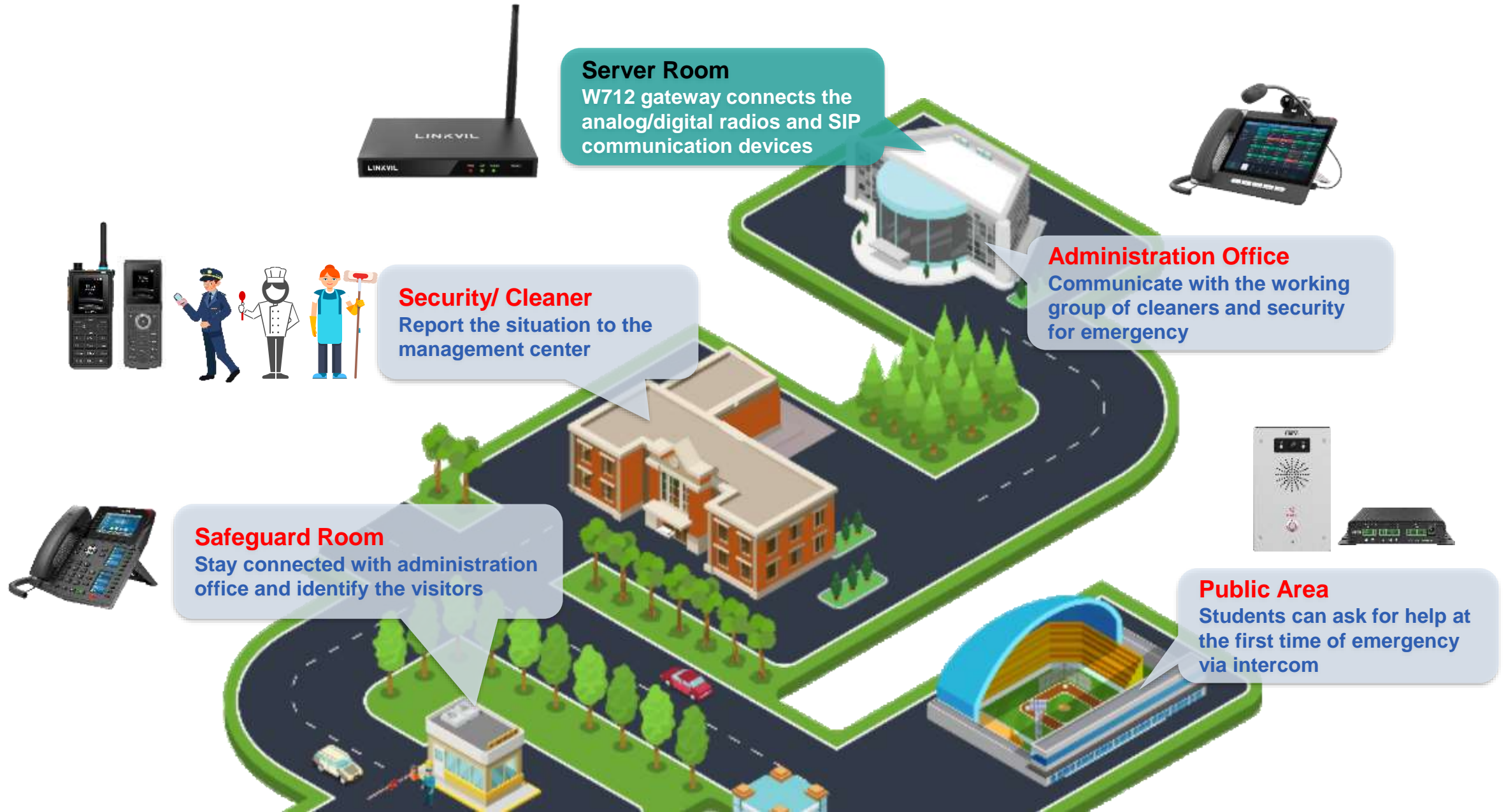


Compact SIP Phone

**Ask for Help  
when Happen to  
Emergency**



# Campus Security: Ensure the Instant Communication for Emergency





Console IP Phone

**Administrators Call the Security for Emergency**



Teacher's Office

**Communicate with Each Other/ Call the Security**



Intercom in Public Area

**Call the Security when Happen to the Campus Violence**



Intercom in Classroom

**Call the Security for Emergency in Class**

**THANKS**

**LINKVIL**

The link to smart world