

### IP Loudspeakers

#### FEATURES:

- SIP And Multicast Enabled
- Easy To Install via RJ-45
- Power over Ethernet (PoE 802.3af)
- Live, Recorded Or Scheduled Messages
- Easily Connect Loudspeaker System To Existing Computer Networks 10/100
- Compatible With Cisco, Nortel, Avaya And Most IP Telephone Systems
- One-Way Paging
- Windows Based Application For Control And Setup
- Can Operate Over Secure Networks
- Paging Prioritization
- Firmware Upgradeable
- High Efficiency
- Line Out Supports Amplified Speakers
- Synchronized Clock Option
- Supervision
- Test / Setup Tones
- Supports Checkmate, PagePro IP
- DHCP Addressable



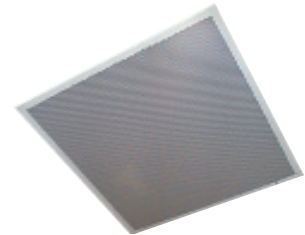
VIP-410 One-Way  
Wall IP Speaker  
Gray w/ Black Grille,  
Paintable Body



VIP-411-DS One-Way  
Wall Mount IP Speaker  
Gray w/ Black Grille,  
w/ Digital Clock



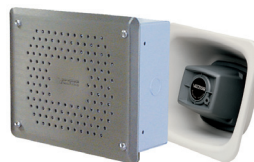
VIP-412-DF One-Way  
Flush Mount IP Speaker  
Gray w/ Black Grille,  
w/ Digital Clock



VIP-402 One-Way  
2' x 2' Lay-in IP Speaker  
w/ integral backbox/bridge



VIP-130L One-Way  
5-Watt High Efficiency  
IP Horn w/Long Line Extender  
(BG) Beige (GY) Gray (M) Marine



VIP-480L One-Way  
IP Horn w/ Long Line Extender  
Vandal-Resistant Enclosure (optional)



VIP-120 One-Way  
8" Round Ceiling  
IP Speaker

## Applications

**General:** Paging/notification applications over existing networks - global WANs

**Governments:** Provide secure, supervised, high survivability notification systems

**Healthcare:** The most practical way to page huge facilities

**Education:** Cost effectively page hundreds of buildings and classrooms (supervised)

**Transportation:** Airports, Ferry Terminals, Subway Stations, Bus Stops, etc

## General Description

### Group Paging Features

Accessible as specific SIP end point and accessible as a multicast group member. Valcom multicast group paging features robust grouping and priority controls. This makes it easy to distribute low priority announcements yet allow high priority paging to override ongoing announcements.

### Group Paging Priority Feature

An absolute priority can be assigned to allow for emergency override in any circumstance. Group paging priorities work locally or across the network in the same fashion allowing facility wide emergency paging.

### Supervision Features

If a fault is detected in speakers it can be reported to an external device or syslog facility.

### Options

Clocks - several styles

Explosion proof speaker available

## SPECIFICATIONS:

### Power

External: 24 VDC @ 325 ma

PoE: 802.3af, class 3

### Networking

10/100 Mbps Ethernet port

Manual or Dynamic Host Configuration Protocol (DHCP) IP address setup.

Time and date synchronization using NTP

### DIMENSIONS AND WEIGHT:

#### VIP-410

**Dimensions:** 10.13" H x 12.31" W x 4.63" D  
(25.73 cm x 31.27 cm x 11.76 cm)

**Weight:** 4.25 lbs (1.91 kg).

#### VIP-411-DS

**Dimensions:** 14.90" H x 12.40" W x 4.67" D  
(37.85cm x 31.50cm W x 11.86cm D)

**Weight:** 5.55 lbs (2.52 kg)

#### VIP-412-DF

**Dimensions:** 20.25" H x 14.38" W x 3.75" D  
(51.4cm x 36.5 cm x 9.5 cm)

**Weight:** 5.55 lbs (2.52 kg)

#### VIP-402

**Dimensions:** 23.75" H x 23.75" W x 4.25" D  
(60.3 cm x 60.3 cm x 10.8 cm)

**Weight:** 6.25 lbs (2.83 kg)

### Protocols

IETF SIP (RFC3261)

IETF IGMP version 3 (RFC3376)

IETF RTP (RFC1889)

IETF RFC2833

Digest Authentication

### Environment

FCC Part 15, WEE

#### VIP-130-L

**Dimensions:** 7.38" H x 10.0" W x 10.4" D  
(18.7 cm x 25.4 cm x 26.4 cm)

**Weight:** 3.5 lbs (1.59 kg)

#### VIP-480-L

**Dimensions:** 6.8" H x 8.3" W x 3.3" D  
(17.3 cm x 21.1 cm x 8.4 cm)

**Weight :** 2.8 lbs (1.27 kg)

**Enclosure Dimensions::** 8.50" H x 11.0" W x 4.0" D  
(21.59cm H x 27.94cm W x 10.16cm D)

**Weight :** 7.5 lbs (3.4 kg)

#### VIP-120

**Dimensions:** 12.88" H x 12.88" W x 4" D  
(32.7 cm x 32.7 cm x 10.2 cm)

**Weight:** 2.7 lbs (1.22 kg)