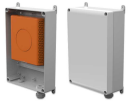


Snom M900 Outdoor DECT Base Station



Product Name: Snom M900 Outdoor DECT Base Station

Manufacturer: Snom

Model Number: M900 Outdoor

Snom M900 Outdoor DECT Base Station

The Snom M900 Outdoor base by Snom offers professional multi-cell DECT technology outdoors, certified with IP55 rating for dust and splash resistance. Its durable housing suits various environments, from offices, warehouses, hospitals to industries, accommodating extra devices. Technically identical to the Snom M900, it supports up to 1,000 bases and 4,000 handsets, boasting a new design and integrated DECT manager for seamless call transfer.

Snom M900 Outdoor DECT Base Station Key Features:

- Wireless software updates for handsets (OTA)
- Multi-cell with up to 1,000 bases in a cluster
- Up to 4,000 handsets in a cluster
- TLS encryption

Security is prioritized with integrated TLS encryption, meeting high standards for day-to-day business communications. Device maintenance is easy via Snom M900's Web UI, allowing wireless software updates and configuration information sent to connected handsets, reducing IT workload significantly.

Snom M900 Outdoor DECT Base Station Technical Specifications

Frequency bands:

- 1880-1900 MHz (EU)

Output power:

- EU < 250 mW

Protocols: DECT

- Seamless handover and roaming
- Handover using DECT or LAN synchronization (IEEE1588)

Wideband audio

- Authentication/encryption of base and handset

Range

- Indoors: Up to 50 meters
- Outdoors: Up to 300 meters

Multicell System

- Up to 4,000 registered handsets in the same network in a multicell setup* using LAN-synchronization
- Up to 1,000 registered base stations in a multicell setup* using LAN-synchronization
- Up to 100 repeaters in a multicell setup(2)
- Up to 8 narrowband or 4 wideband calls per base station in a multicell setup
- Up to 10 narrowband or 5 wideband calls per base station in single-cell set-up
- Common phonebook with up to 3000 entries

Snom M900 Outdoor DECT Base Station

- List of registered handsets
- Compatible with M700 running the same software version

Audio, Codecs

- G.722 (5 channels; 4 in multicell operation)
- G.711 A-law, μ -law
- G.726 (10 channels; 8 in multicell operation)
- Codec negotiation, codec switching
- A900 enables
- G.729 (10 channels, 8 multicell operations)
- BV32 (10 channels, 8 multicell operations)
- Opus (8 channels)

User Interfaces

- LED status indication, multicolor
- Reset key
- Web interface

Installation

Positioning:

- Wall mounting
- Ceiling mounting
- Remote software updates via HTTP/HTTPS/TFTP
- Automatic loading of settings via HTTP/HTTPS/TFTP
- Completely configurable through the Web interface
- Static IP, DHCP support
- NTP (Network Time Protocol)
- Secure provisioning and authentication with Mutual TLS through individual certificate issued by Snom CA
- Compatible handset feature RSSI tool, no additional measurement equipment needed

Hardware Specifications

- Weight: approx. 1,100g
- Dimensions: approx. 144x140x35mm (base) approx. 300x175x80mm (housing)
- Antenna diversity (two internal omni-directional antennas for better transmission and reception)
- Power: Power over Ethernet (PoE) IEEE802.3af Class 2. If PoE is not available, the A5 PoE injector can be used (not included)(3)
- Ethernet connector: RJ 45
- LAN interface: 10/100 BASE-T IEEE 802.3
- Colour: Orange (base), Light grey (housing)
- Temperature range: -20°C to +60°C
- Housing IP55 protection rated
- UV protected
- Impact strength IK08
- UL746C 5V flammability tested
- UL746C water exposure tested

Network

- HTTP and HTTPS

Snom M900 Outdoor DECT Base Station

ï¿½ LLDP
ï¿½ IEEE 802.1Q
ï¿½ TLS 1.2

Price: £402.00
