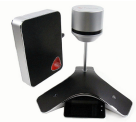


## Polycom CX5500 Unified Conference Station



Product Name: Polycom CX5500 Unified Conference Station

Manufacturer: -

Model Number: 2200-63880-102

Please Note: This item has been discontinued. See the Poly G40-T for an alternative.

### Polycom CX5500 Unified Conference Station

The Polycom CX5500 unified conference station brings together the powerful collaboration capabilities of voice, video, and content, through a unique 360-degree panoramic view of the entire room. A second HD video is also sent at 1080p resolution using advanced technology that automatically focuses on the current speaker and tracks the flow of conversation to enable richer, more interactive communication.

### Polycom CX5500 Key Features

- 360° 1080p USB camera with active speaker detection
- Panoramic video stream output
- 20ft (6 meter) microphone pickup range
- 160 Hz–22kHz audio processing
- Optimised for use with Microsoft Lync 2013
- Supported on Skype for Business (forward compatible)

### Polycom CX5500 - Technical Specifications

#### Dimensions

- Table Console: -Footprint (W x D): 369 x 325 mm -Height: 348 mm (privacy cap closed), 401 mm (privacy cap extended) -Weight: 2.44 kg (exclusive of cables)
- Power Data Box: -Size (W x H x D): 209.5 x 300 x 56 mm (excluding stand) -Weight: 2.9 kg
- Shipping: -Size (W x H x D): 520 x 430 x 430 mm -Weight: 9.29 kg

#### Video performance

- Panoramic video resolutions supported: -1920 x 288 pixels (requires USB 3.0 and Lync 2013 or Skype for Business) -1280 x 192 pixels (requires USB 3.0 and Lync 2013 or Skype for Business) -1056 x 144 pixels
- Active speaker video resolutions supported -HD 1080: 1920 x 1080 pixels (requires USB 3.0 & Lync 2013 or Skype for Business) -HD 720: 1280 x 720 pixels -VGA: 640 x 480 pixels -CIF: 352 x 288 pixels
- Frame rate for panoramic and active speaker video, maximum -30 frames per second with 60 Hz AC power -25 frames per second with 50 Hz AC power -Maximum frame rates with systems prior to Lync 2013 will be limited to 15 fps (12.5 @ 50 Hz)

#### Audio performance

- Console Loudspeaker -Frequency response: 160 Hz–22 kHz -Volume: adjustable to 88 dBA SPL (peak) volume at 0.5 meters
- Console microphones -3 microphones for omnidirectional coverage -Frequency response: 160 Hz–22 kHz

#### Telephony Performance

- Full Duplex (Class 1) with noise suppression

## Polycom CX5500 Unified Conference Station

- Comfort noise fill
- DTMF tone generation/DTMF event RTP payload
- Low-delay audio packet transmission
- Adaptive jitter buffers
- Packet loss concealment
- Acoustic echo cancellation
- Background noise suppression
- Supported codecs are G.711 (A-law and  $\mu$ -law), G.729AB, G.722, G.722.1, G.722.1C, G.719

### Call handling features

- Call timer
- Call transfer, hold, divert (forward), pickup
- Called, calling, connected party information
- Local three-way conferencing
- One-touch speed dial, redial
- Call waiting
- Remote missed call notification
- Automatic off-hook call placement
- Do not disturb function
- Lync client device synchronisation
- Lync USB call control for Answer, Reject, End Call, Hold, Resume and Swap

### Protocol support

- IETF SIP (RFC 3261 and companion RFCs)

### Network and provisioning

- IP Address Configuration: DHCP and Static IP
- Time synchronisation with SNTP server
- FTP/TFTP/HTTP/HTTPS serverbased central provisioning for mass deployments. Provisioning server redundancy supported.
- Web portal for individual unit configuration
- QoS Support—IEEE 802.1p/Q tagging (VLAN), Layer 3 TOS and DSCP
- Network Address Translation (NAT) support—static
- RTCP support (RFC 1889)
- Event logging
- Local digit map
- Hardware diagnostics
- Status and statistics
- User selectable ringer tones
- Convenient volume adjustment keys
- Field upgradeable

### Security

- Transport Layer Security (TLS)
- Encrypted configuration files
- Digest authentication
- Password login
- Support for URL syntax with password for boot server
- HTTPS secure provisioning Support for signed software executables

## Polycom CX5500 Unified Conference Station

### User interface

- 3 mute buttons with mute/in-call indication lamps
- Camera on/off indication lamp
- Captive privacy cap with integrated on/ off switch for client synch
- Gesture based, multi-touch capable capacitive touchscreen for voice calls
- 4.3in LCD (480 x 272 pixels) resolution
- User-configurable contact directory and call history (missed, placed, and received)
- Customisable call progress tones
- Wave file support for call progress tones

### Console connectivity

- Proprietary system port for connection to Power Data Box
- USB 3.0 Type A port for proprietary connection to Power Data Box
- USB 3.0 Type B port for connection to PC
- USB 2.0 Type A port for diagnostics/ software update
- 2 extension microphone ports

### Power data box connectivity

- Proprietary system port for connection to console
- USB 3.0 Type A interface for proprietary connection to console or to Lync appliance
- USB 2.0 Type A for diagnostics/software update
- Ethernet: RJ-45 10/100/1000 Mbit
- Audio RCA jacks (reserved for future use)
- AC power input

### Physical security

- Kensington-style lock slot on Console and Power Data Box

### Extension microphones (optional accessory)

- Frequency response: 160 Hz&ndash;22 kHz
- Mute button and indicator lamp Regulatory compliance

### Regulatory

- Safety -UL 60950-1 -EN 60950-1 -CSA C22.2 60950-1 -IEC 60950-1 -AS/NZS 60950-1 -GB4943-2011 (China) -KCC approval (Korea)
- EMC -CISPR 22 Class B (FCC, ICES, AS/NZS) -VCCI Class B -EN 55022 Class B -EN 55024 -GB9254:2008, YD/T993-1998 (China) -KCC approval (Korea) -ANATEL (Brazil)

### Environmental requirements

- Operating temperature: 0&ndash;40&ordm;C
- Relative humidity: 15&ndash;85% (non-condensing)
- Storage temperature: -40&ndash;60&ordm;C
- Recommended room conditions

### Warranty

- 12 months

## Polycom CX5500 Unified Conference Station

Polycom CX5500 ships with

- Tabletop console with integrated 360° camera
- Power data box with stand
- Quick setup card
- Cables

**Price: £4,405.10**

---